



PROGRAMA ESCOLHAS

CHOICES PROGRAMME



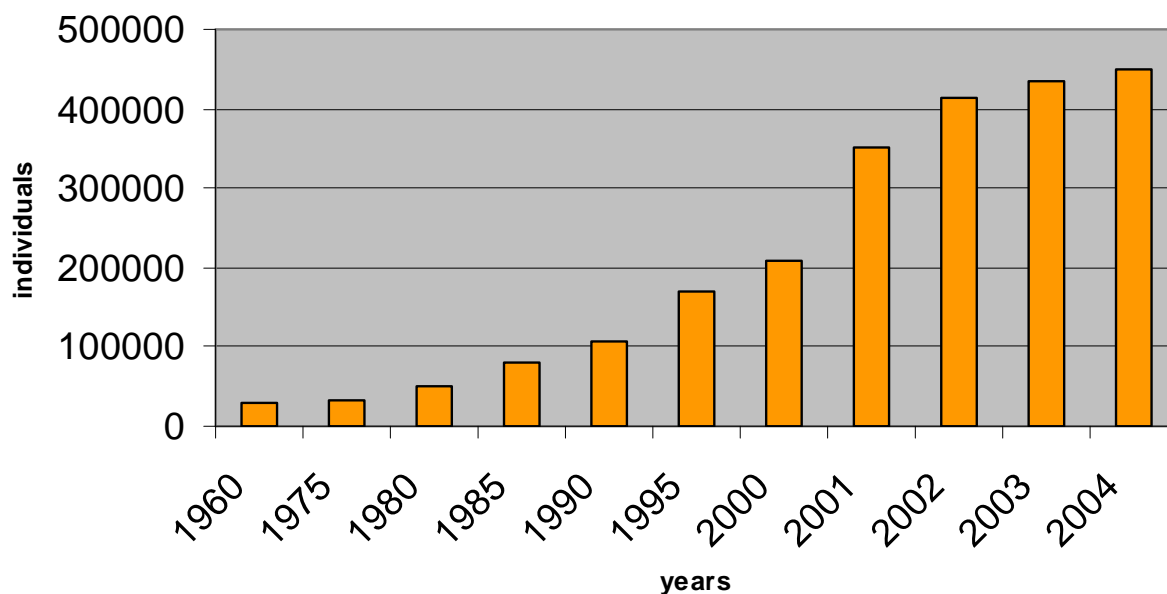
Lisbon, 2nd October 2006

E2G
ESCOLHAS 2ª GERAÇÃO



Diagnosys

**Evolution in the number of foreigners
with residence permits**



1960 – 29.428

1980 – 50.750

1990 – 107.767

1994* – 157.073

2000 – 207.607

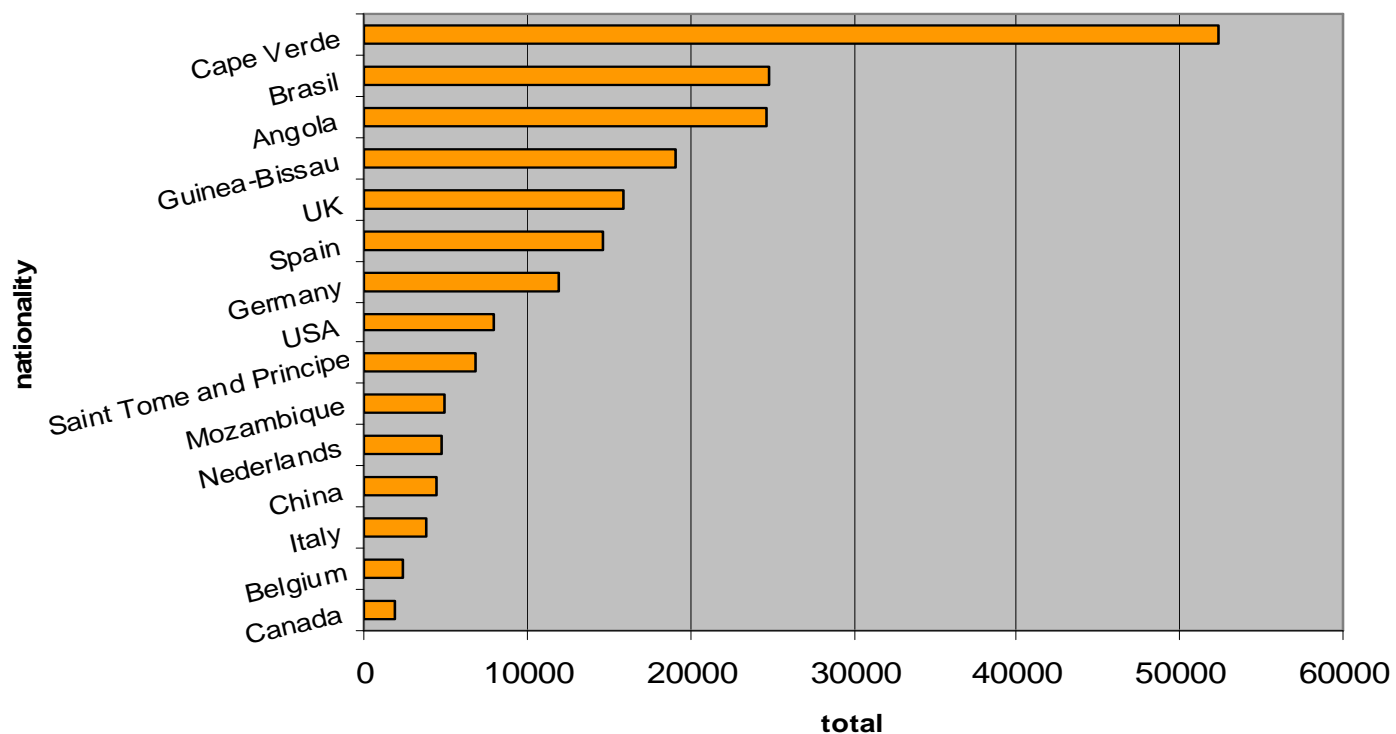
2001 – 350.503

2004 – 449.016

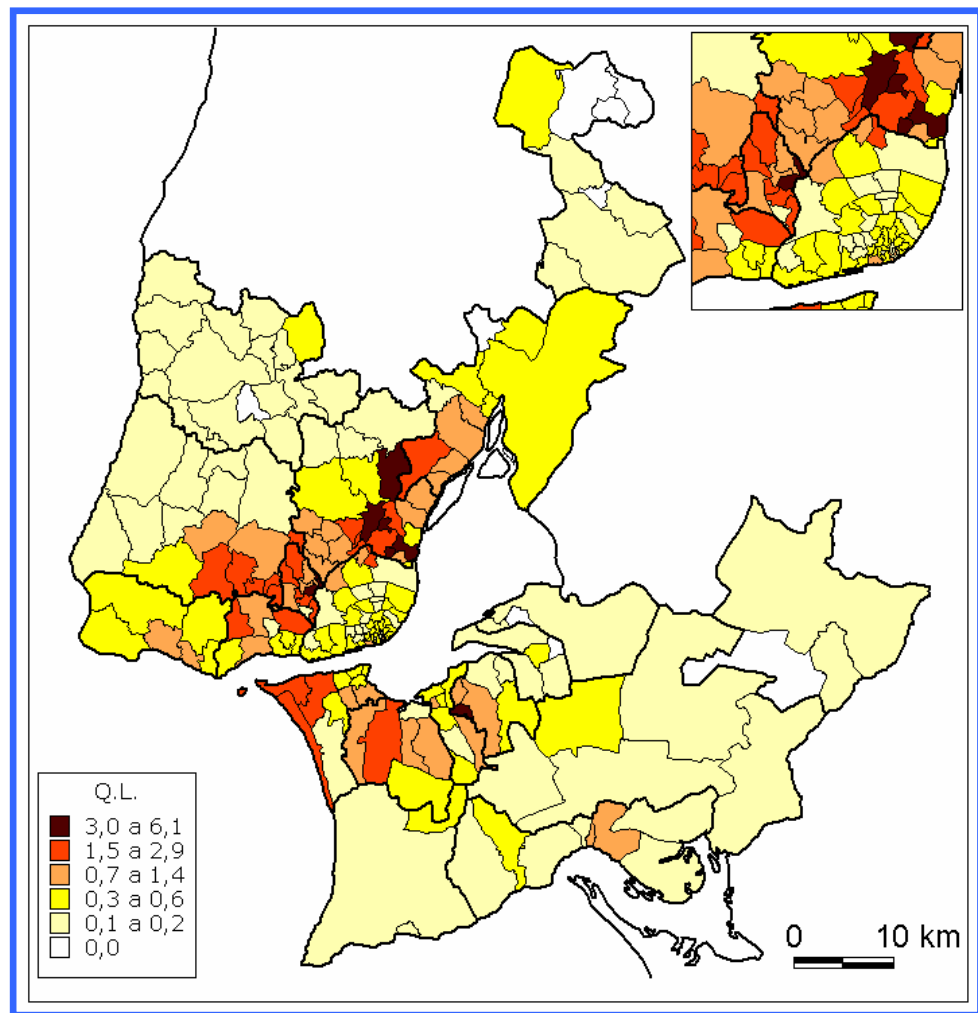


Diagnosys

Number of foreigners with residence permits in 2002 (15 +)



Diagnosys



Location Quotients for
African immigrants
and EU citizens,
living in LMA, 2001
(Lucinda Fonseca et al)

Africans



Diagnosys

- Legalization difficulties and access to the portuguese nationality
- Identity conflicts
- Spatial segregation of the immigrants and their descendants
- Vulnerability towards risk factors leading to social exclusion
- Initial learning difficulties in the portuguese language
- Mismatch between existing educational responses and the needs and potentialities of immigrant descendants
- School proficiency
- Dificulties in accessing professional training and employment
- Low expectations and low vertical social mobility
- Weak representation and participation in the host society
- Lack/Insufficiency of occupational and ludical responses
- Existence of stereotypes associated with these children and youngsters
- Lack of evidence based studies regarding these target-groups





Main Aim

>> **Programa Escolhas 2ª Geração (Choices Programme Second Generation) aims to support the social integration of children and youngsters from the most disadvantaged and problematic social contexts.**





Specific Targets

>> Support the **social integration of children and youngsters from the most vulnerable neighbourhoods;**

>> **Social, educational, parental, professional and personal training;**

>> **Development of a feeling of belonging in the Portuguese society, in immigrants descendants.**





Target Groups

>> Children and youngsters from disadvantaged contexts, from 6 to 18 years old;

>> If pertinent to the Project, youngsters from 19 to 25;

>> Immigrant descendants and ethnical minorities;

>> Others (families, for example).



Intervention Areas



>> **Area I** -
Prevention of school failure and promotion of professional training ;





>> **Area II** -Leisure time occupation.





>> **Area III** -
Integration of
descendants of
immigrants and ethnical
minorities .





>> **Area IV – Training
in communication
technologies (digital
inclusion)**



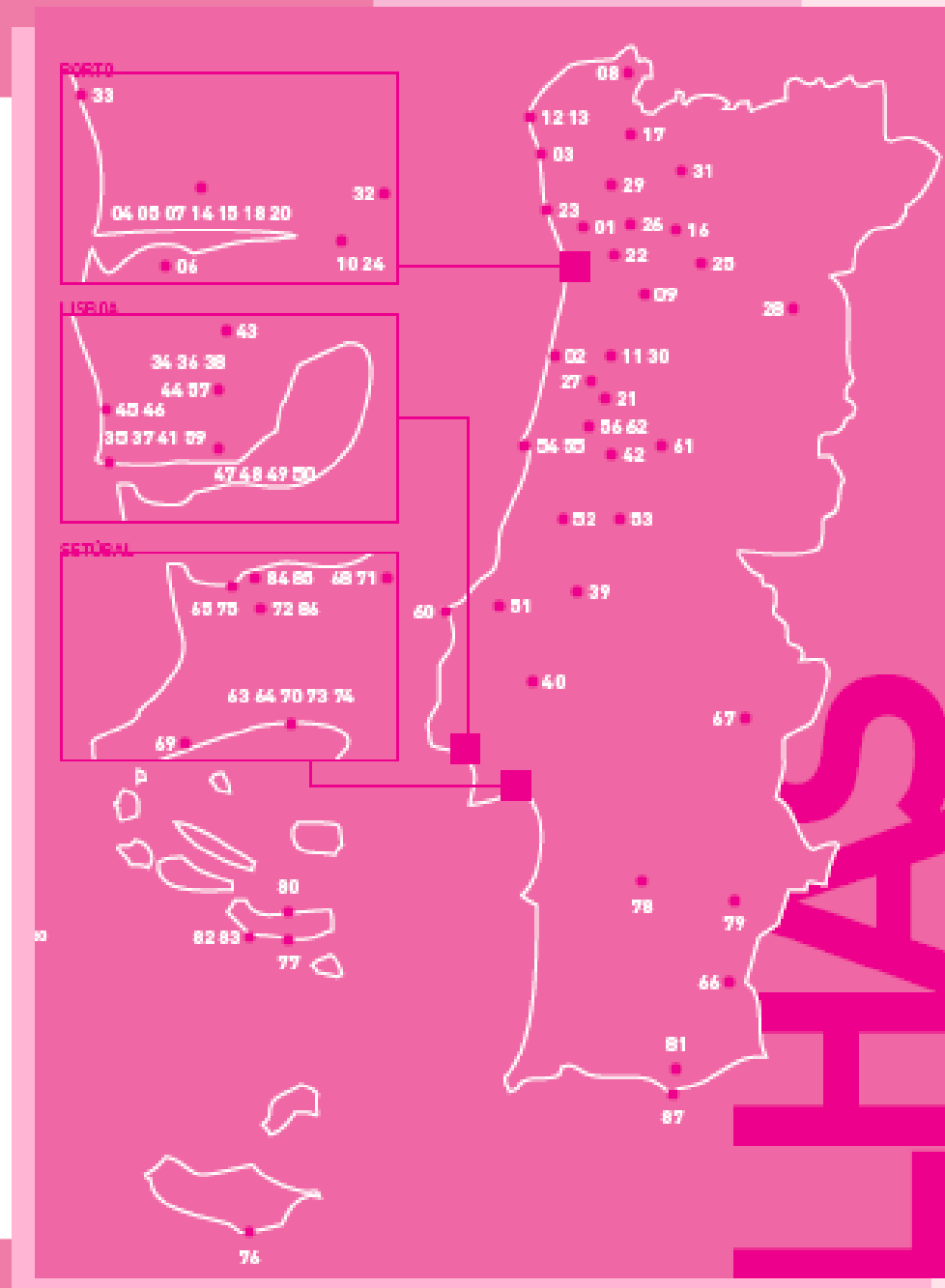
Projects

>> 86 projects :

> North: 32

> Center: 29

> South and Islands: 25





IMPACT



Totals

	<i>North</i>	<i>Center</i>	<i>South</i>	<i>Total</i>
<i>Individuals</i>	13740	13464	11428	38632
Children/Youngsters	10005	11207	9617	30829
Families	2112	1524	1038	4674
Others	1623	733	773	3129





NUMBERS

Gender

Gender	%
<i>Masculine</i>	50,1
<i>Feminine</i>	49,9

Age

Idade	%
<i>Less than 6</i>	0,3
<i>6-10</i>	21,8
<i>11-13</i>	22,9
<i>14-18</i>	27,2
<i>19-24</i>	7,5
<i>Above 24</i>	20,3





OTHER

- It's a governmental Program, managed by the **Presidency of the Council of Ministries**.
- It's coordinated by the **High Deputy for Immigration and Ethnical Minorities**.
- In 2005/2006 the Program has expenditures of 14 million euros, and is funded by **Social Security** and **Operational Program "Knowledge Society"**.
- www.programaescolhas.pt

